



STAN TUG 1907

STOCK

PICTURE OF SIMILAR VESSEL

GENERAL

Yard number	503429
Basic functions	Towing, pushing, mooring and Ø fire-fighting operations
Classification	Bureau Veritas I * HULL • MACH Tug Coastal Area
Painting	Epoxy paint system

DIMENSIONS

Length overall	19.54 m
Beam overall	7.74 m
Depth at sides	3.39 m
Draught aft	2.95 m
Displacement	185 t
Scantlings	Hull plating 10 mm, sheerstrake 20 mm

TANK CAPACITIES

Fuel oil	21.2 m ³
Fresh water	3.1 m ³
Sewage	1.7 m ³
Bilge water	1.3 m ³
Lubrication oil	1.1 m ³
Dirty oil	1.0 m ³
Ø Foam	4.2 m ³

PERFORMANCES

Bollard pull	28.4 t
Speed	11.8 kn

PROPULSION SYSTEM

Main engines	2x Caterpillar C32 TTA ACERT / A
Total power	1492 bkW (2001 bhp) at 1800 rpm
Gearboxes	2x Reintjes WAF 562L 5.947:1
Propellers	2x Kaplan II fixed pitch
Steering gear	Powered hydraulic 2x 45°, with rudder indicator
Nozzles	2x 1800 mm Van de Giessen "Optima"
Rudders	2x streamlined, double plate

AUXILIARY EQUIPMENT

Generator set	Caterpillar C4.4 NA, 230/400 V, 47 kVA, 50 Hz
Battery sets	2x 24 V 400 Ah + change over facility
Alarm system	Engines, gearboxes and bilge alarm
Bilge pump	2x SIHI AKHA 5101, 20 m ³ /h at 14 m.w.g.
Fuel oil system	Duplex filters, water separator and SOS valve
Cooling system	Closed cooling system
Fresh water system	Electrical hydrophore and sewage pump
Ventilation	2x electrically driven Salor HU60, capacity 15.000 m ³ /h
Ø External fire fighting	Caterpillar C7 Acert, 300 m ³ /h with one monitor
Ø Internal fire fighting	Novec system

DECK LAY-OUT

Anchor	2x 135 kg Pool (High Holding Power)
Chain	Total 220 m shortlink chain 16 mm
Anchor winch	DMT, electrically driven with warping head
Towing winch	10 ton at 23 m/min, 60 ton brake at first layer, 300 m and 38 mm diameter steel wire
Coupling winches	2x manual operated coupling winches with 25 ton holding power, 35 m and 20 mm diameter wire
Ø Capstan	Electric, 3 ton at 15 m/min
Crane + winch	Heila HLM 10-3S 0.8 ton at 10.36 m + winch MW 14
Towing hook	Mampaey, disc type SWL 450 kN
Life raft	One on top deck, 6 persons
Fendering	Rubber block bow fender, D-fendering around the hull

ACCOMMODATION

For 4 persons, completely insulated and finished with durable modern linings, acoustical ceiling in de wheelhouse and floating floors. Air-conditioned and heated accommodation with two double crew cabins, pantry, toilet and sanitary space below main deck.

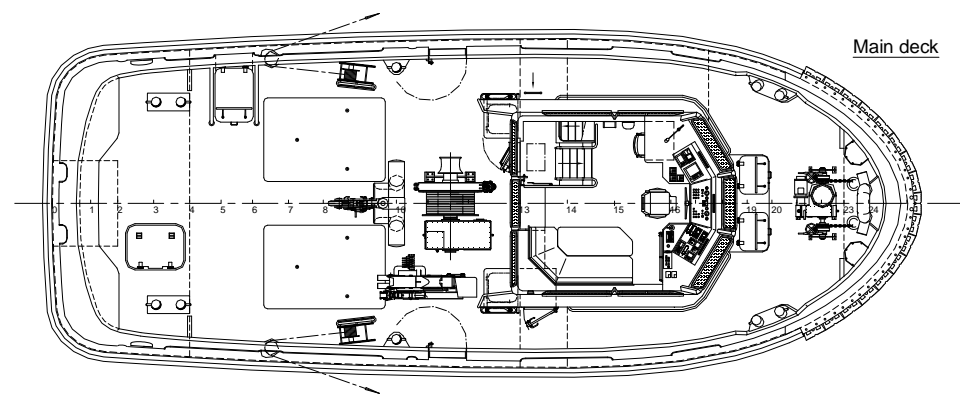
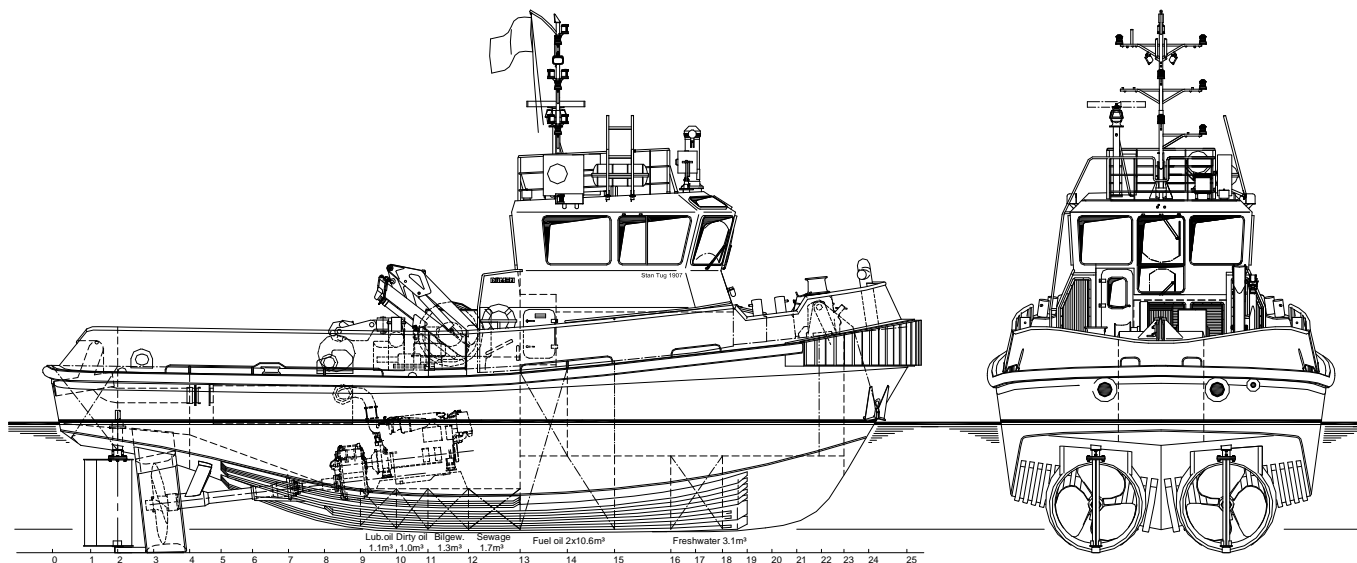
NAUTICAL AND COMMUNICATION EQUIPMENT

Searchlight	Pesch, 24 V, 500 W
Radar	Furuno FR-8062
Ø Autopilot	Simrad AP-70
GPS	Furuno GP-32
VHF	1x Sailor Compact 6248
Ø Navtex	Furuno NX-700A
Echosounder	Furuno LS-6100

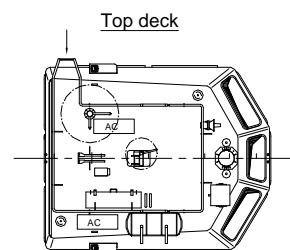
Ø = Optional equipment

STAN TUG 1907

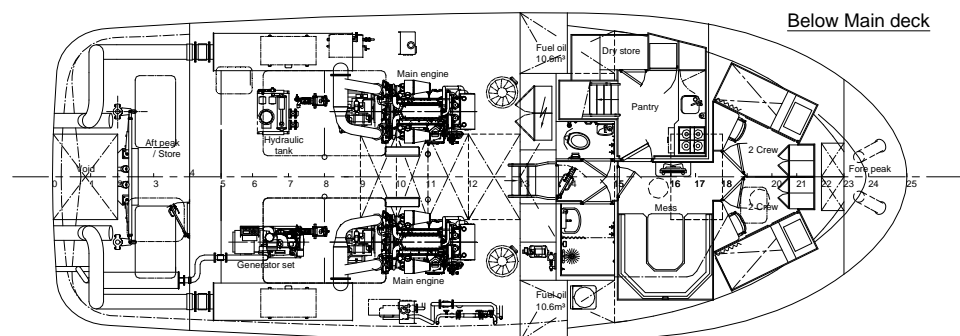
STOCK



Main deck



Top deck



Below Main deck



DAMEN SHIPYARDS GROUP

Avelingen-West 20
4202 MS Gorinchem
The Netherlands

P.O. Box 1
4200 AA Gorinchem
The Netherlands

phone +31 (0)183 63 99 22
fax +31 (0)183 63 21 89

info@damen.com
www.damen.com