

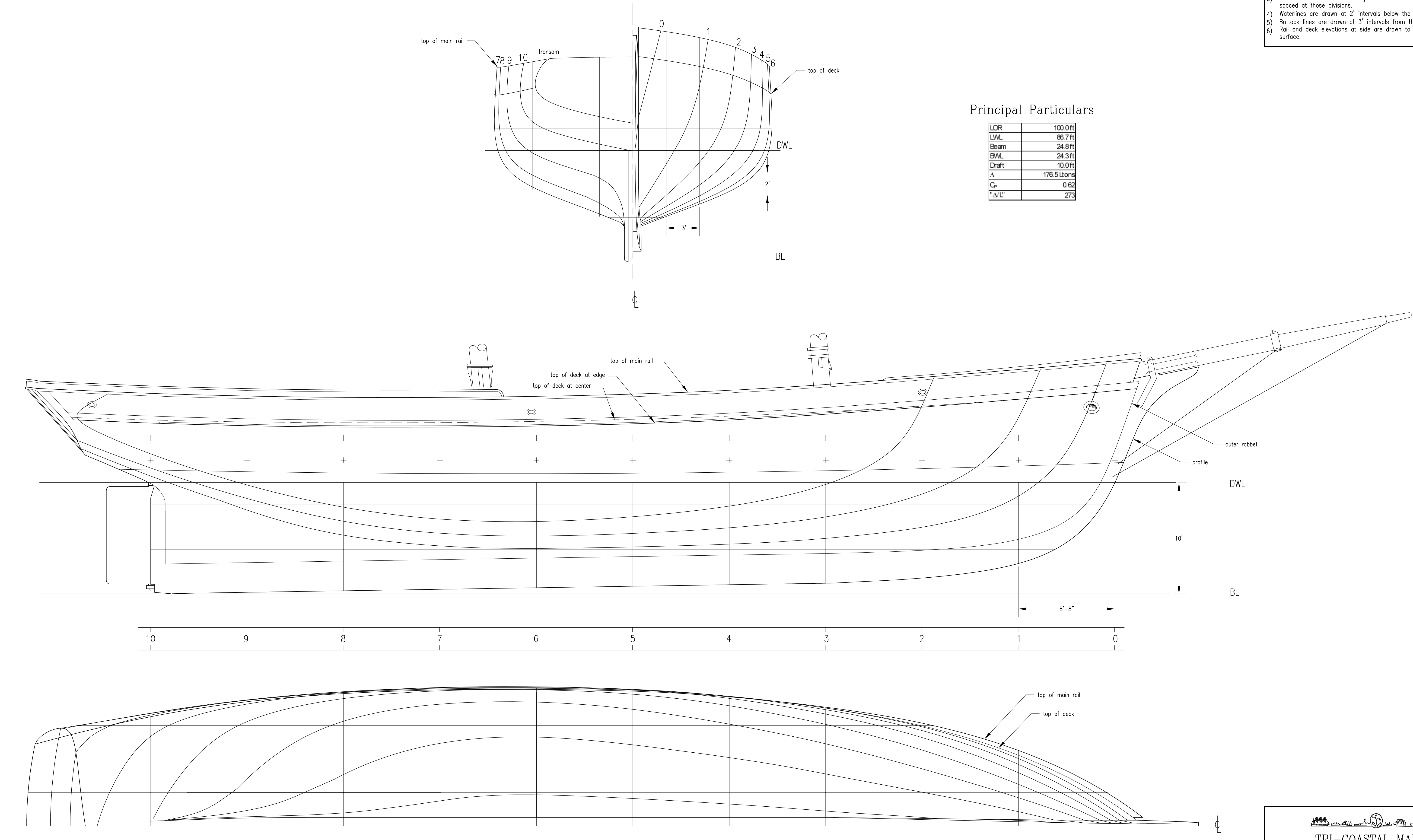
C:\jobs\MT Brigantine\dwgs\unumbered\00 Arrangement\510100 Lines plan.dwg, 5/10/10 Lines plan, 5/4/2012 8:41:04 AM

Notes

- 1) Lines and offsets are to the outside of planking.
- 2) The design waterline is 10' above the baseline.
- 3) The LWL is divided into 10 equal increments of 8.67'. Stations are spaced at those divisions.
- 4) Waterlines are drawn at 2' intervals below the DWL.
- 5) Buttock lines are drawn at 3' intervals from the CL.
- 6) Rail and deck elevations at side are drawn to the upper finished surface.

Principal Particulars

LOR	100.0 ft
LWL	86.7 ft
Beam	24.8 ft
BWL	24.3 ft
Draft	10.0 ft
Δ	176.5 tons
C <sub>p</sub>	0.62
"Δ"/L"	273



TRI-COASTAL MARINE

SCALE: 1/4" = 1'	DRAWN BY: ad
DATE: September 9, 2011	CHECKED BY:
TITLE:	

Matthew Turner Brigantine  
Lines Plan

PLAN: 510100	REV:
--------------	------