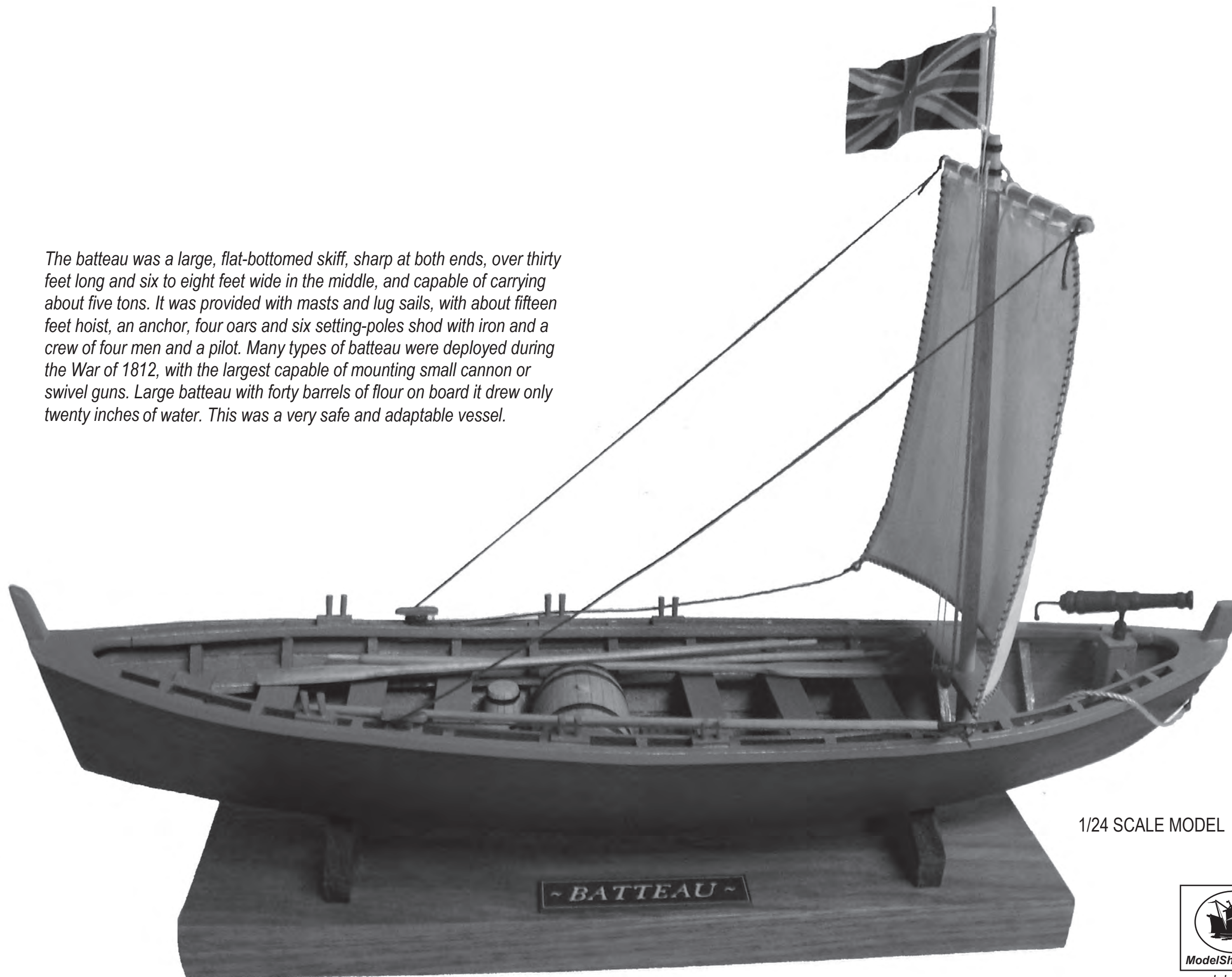


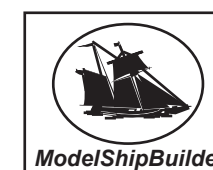
The batteau was a large, flat-bottomed skiff, sharp at both ends, over thirty feet long and six to eight feet wide in the middle, and capable of carrying about five tons. It was provided with masts and lug sails, with about fifteen feet hoist, an anchor, four oars and six setting-poles shod with iron and a crew of four men and a pilot. Many types of batteau were deployed during the War of 1812, with the largest capable of mounting small cannon or swivel guns. Large batteau with forty barrels of flour on board it drew only twenty inches of water. This was a very safe and adaptable vessel.



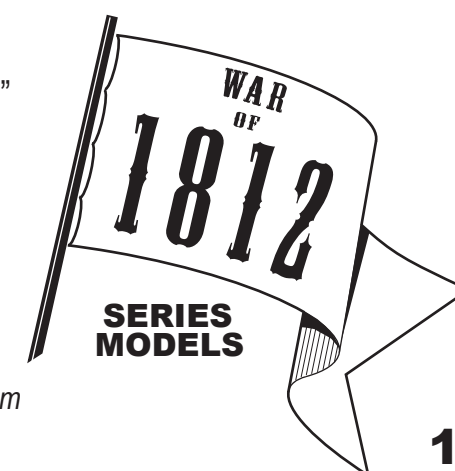
Batteau

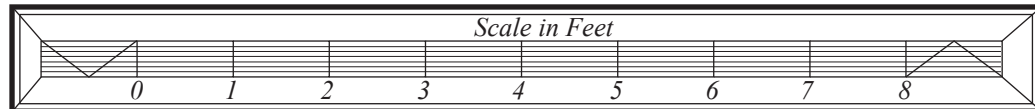
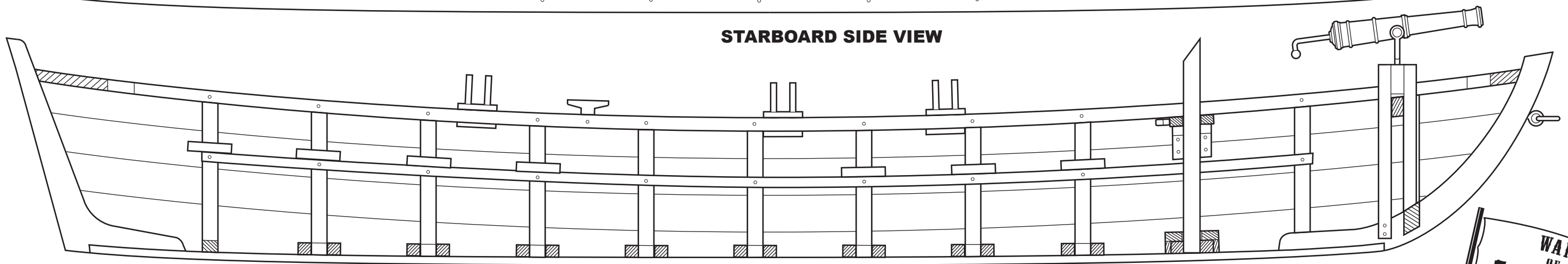
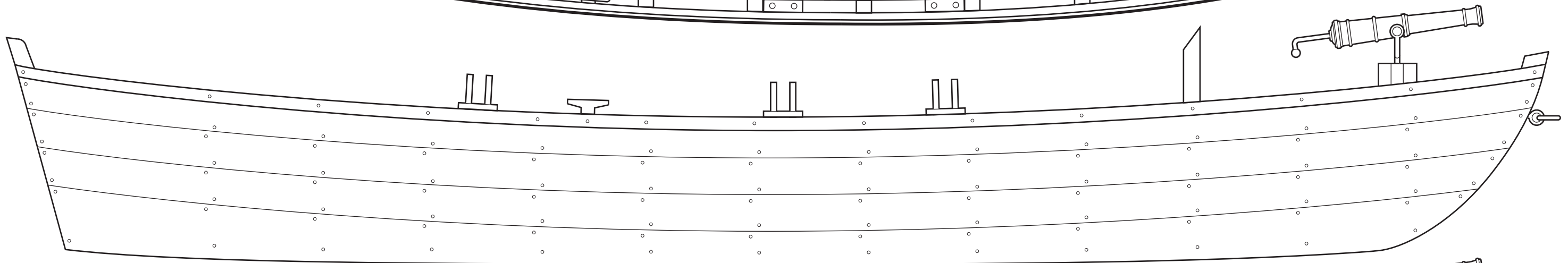
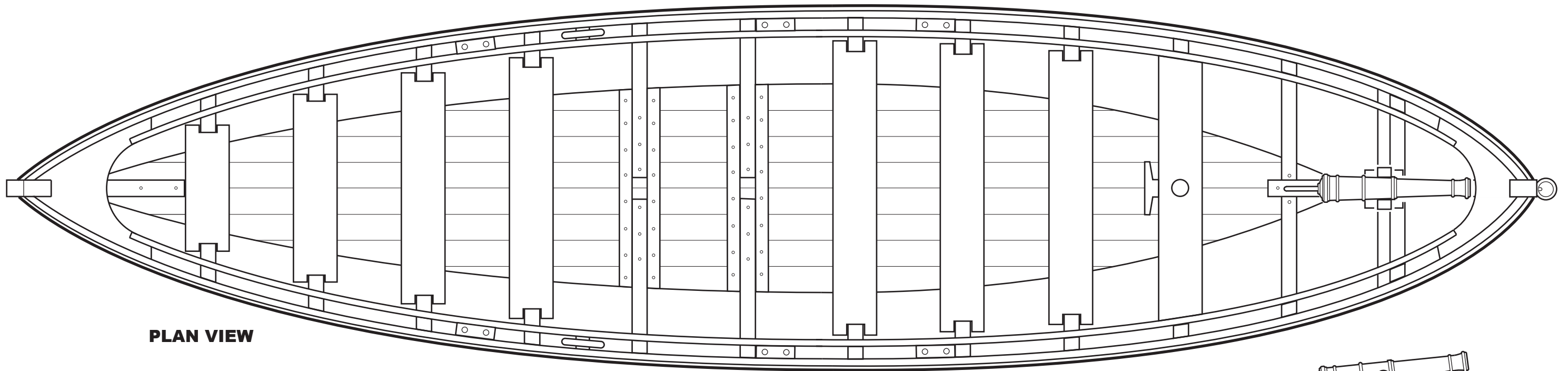
Drawn by Jeff Staudt - January, 2011

1/24 SCALE MODEL 1/2" = 1'-0"



www.modelshipbuilder.com



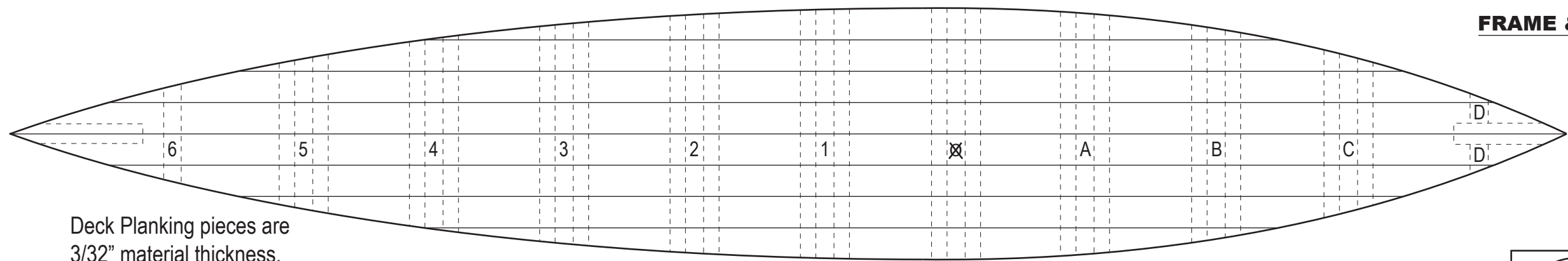
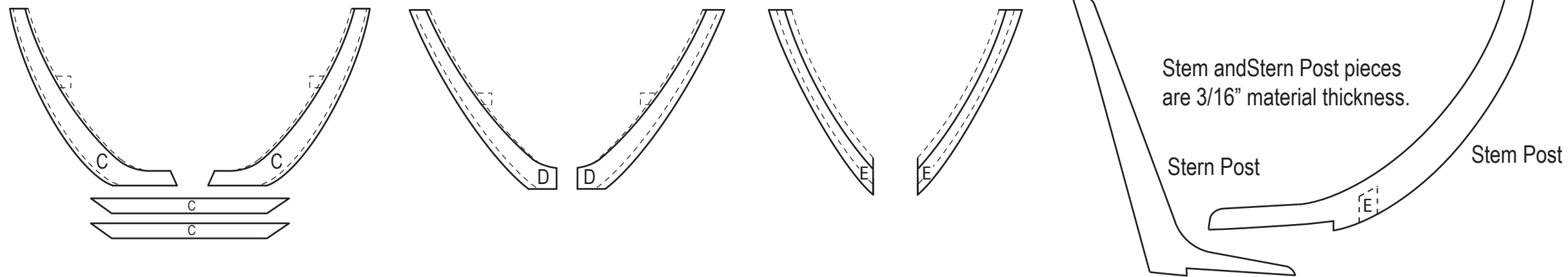
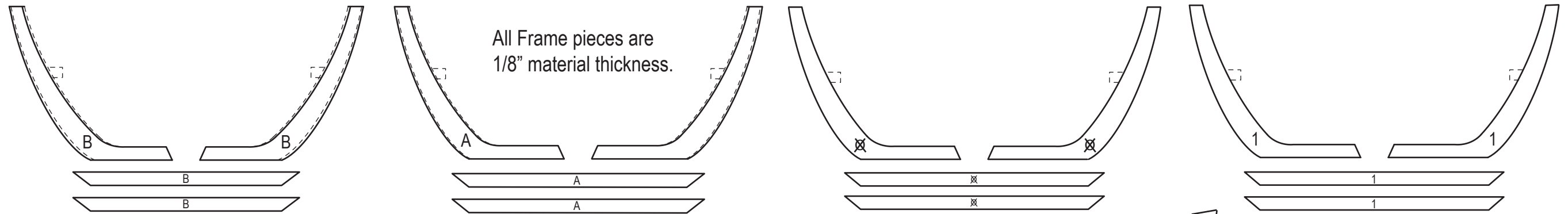
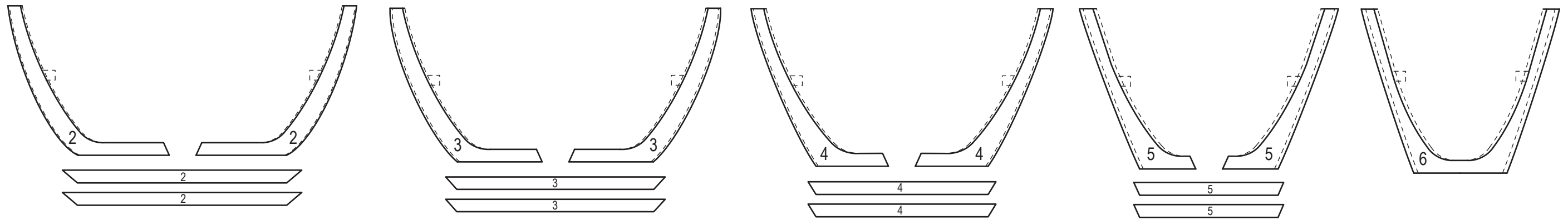


Batteau
 Drawn by Jeff Staudt - January, 2011

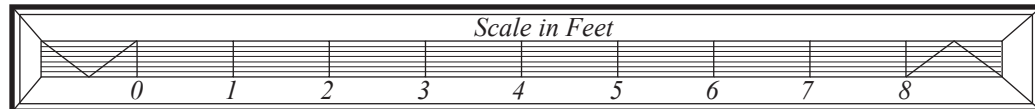


www.modelshipbuilder.com



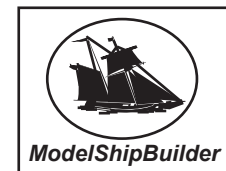


Deck Planking pieces are
3/32" material thickness.



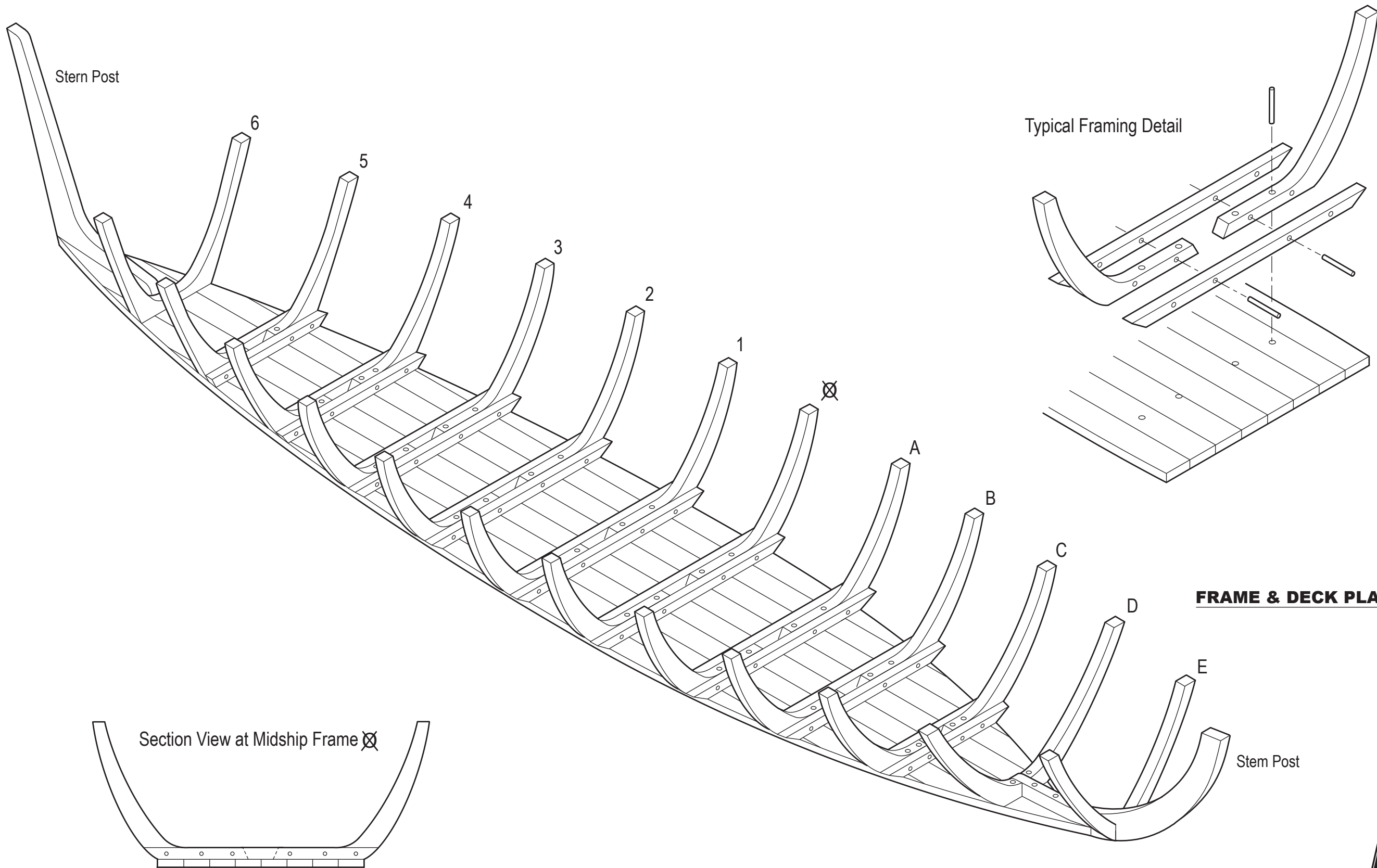
Batteau
Drawn by Jeff Staudt - January, 2011

FRAME & DECK PLANKING TEMPLATES

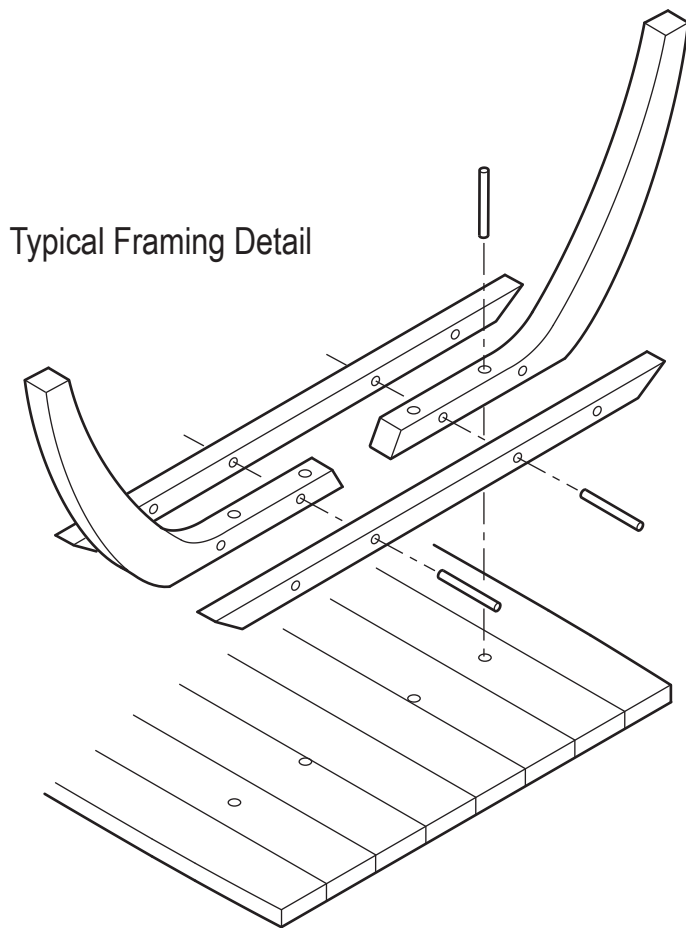


www.modelshipbuilder.com

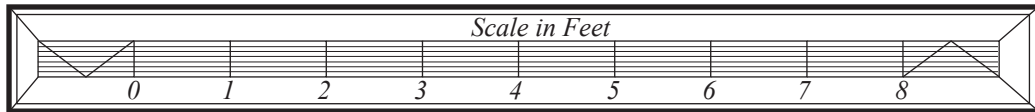
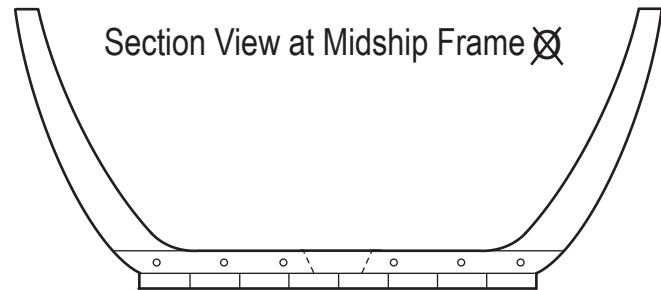




Typical Framing Detail

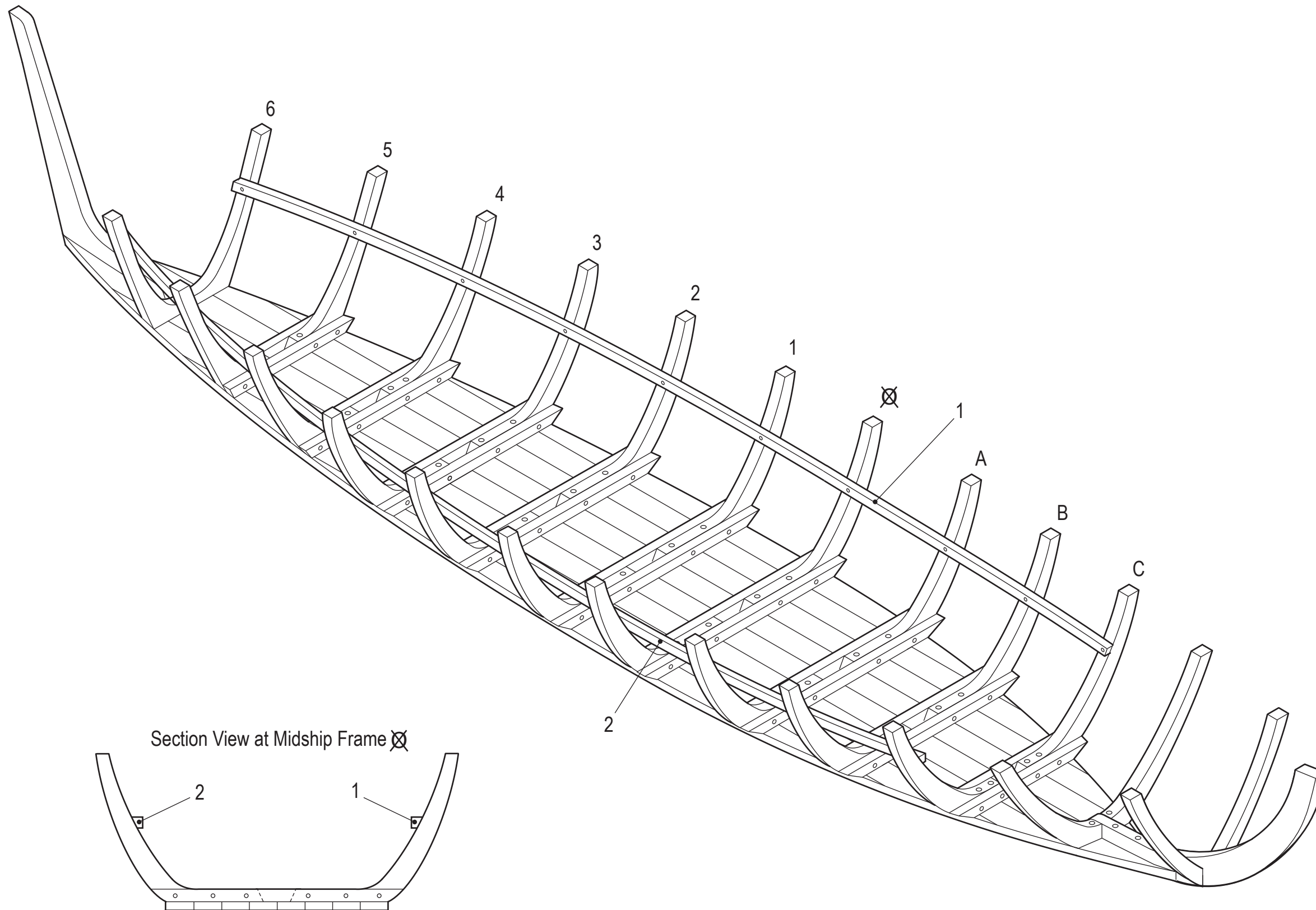


FRAME & DECK PLANKING ASSEMBLY



Batteau
 Drawn by Jeff Staudt - January, 2011

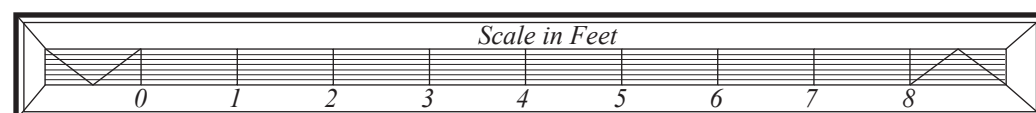
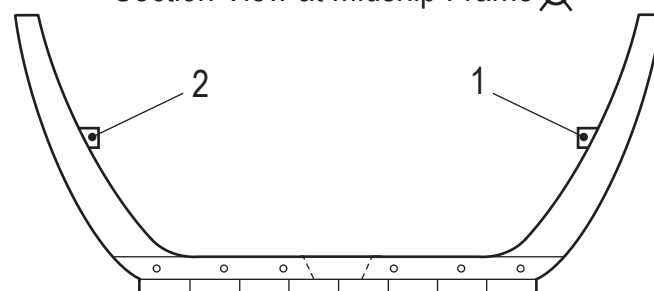




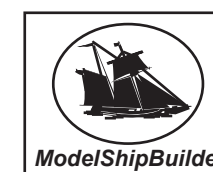
STRINGERS

- 1. Port Side Stringer
- 2. Starboard Side Stringer

Section View at Midship Frame X

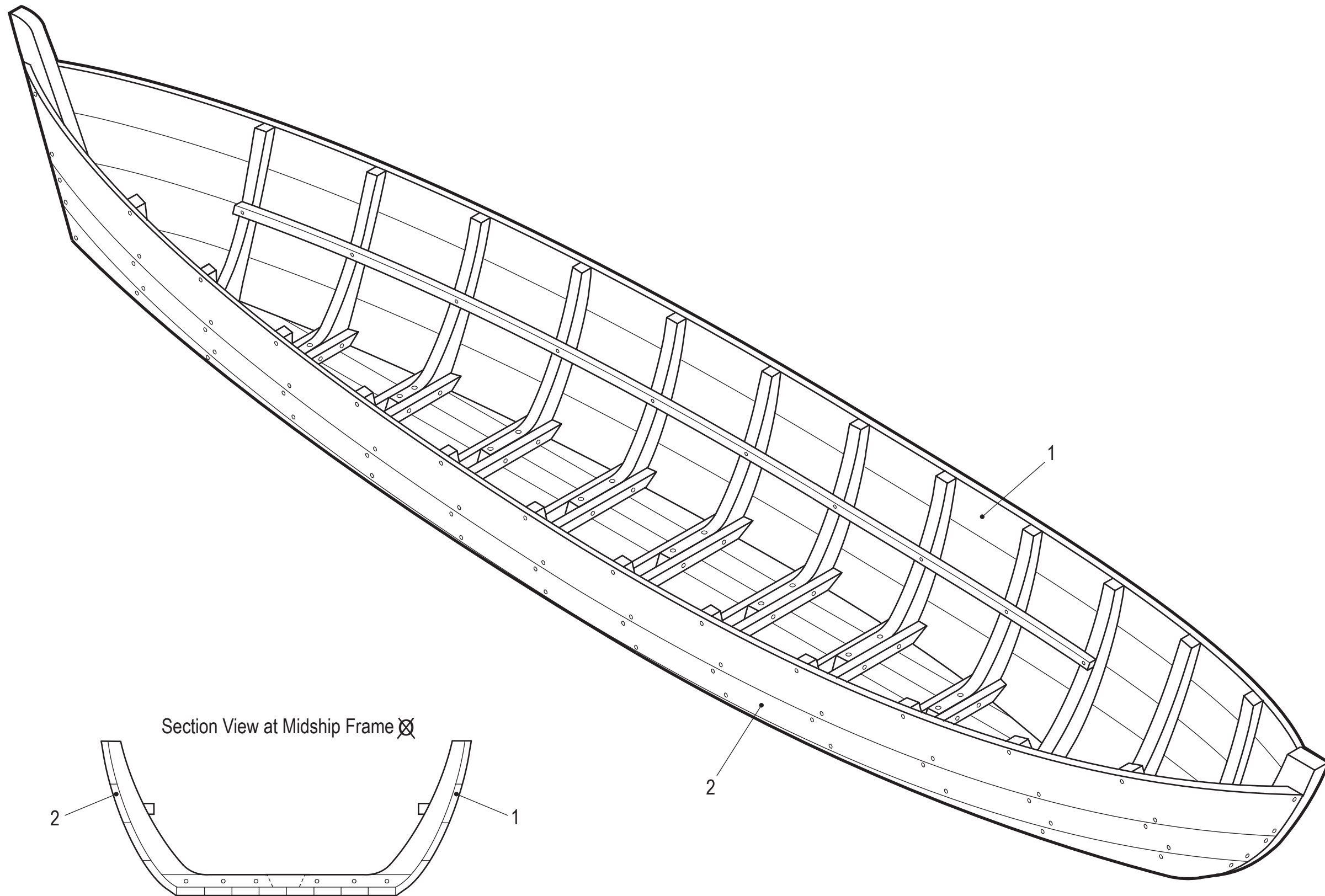


Batteau
 Drawn by Jeff Staudt - January, 2011



www.modelshipbuilder.com

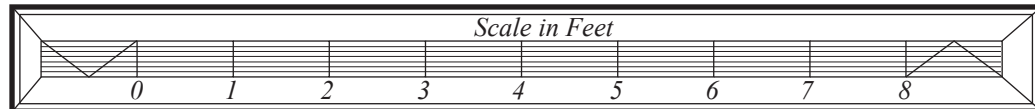
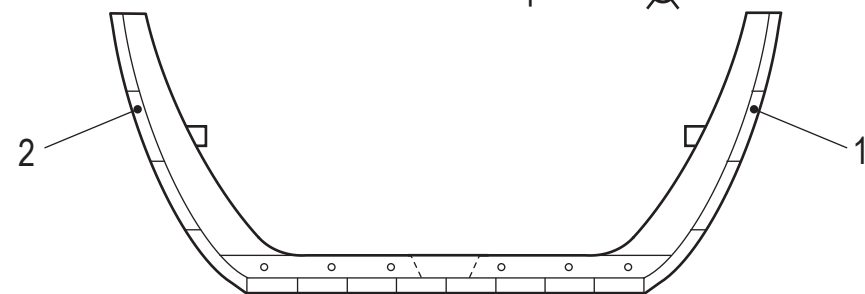




OUTSIDE PLANKING

1. Port Side Planking
2. Starboard Side Planking

Section View at Midship Frame X

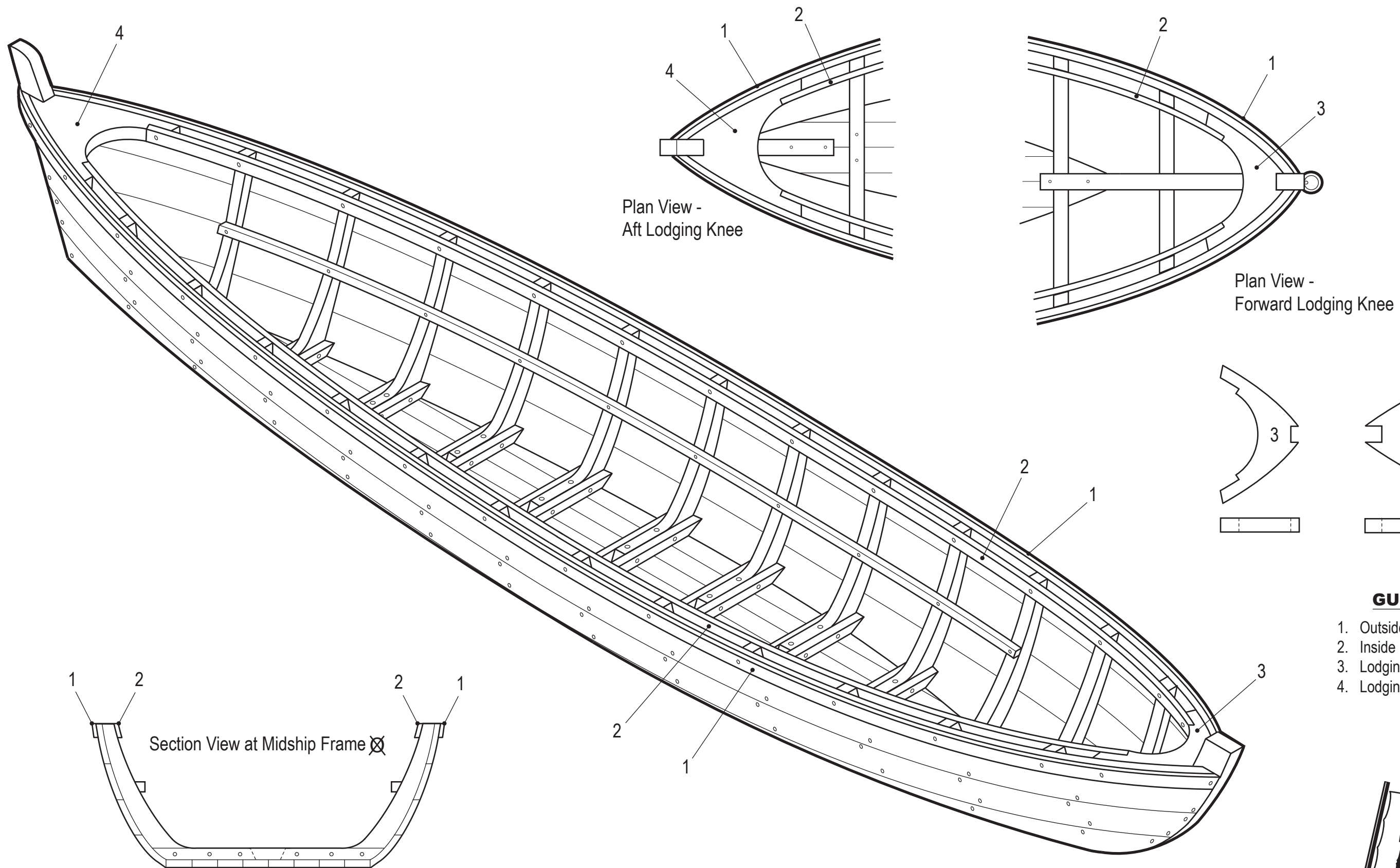


Batteau
 Drawn by Jeff Staudt - January, 2011



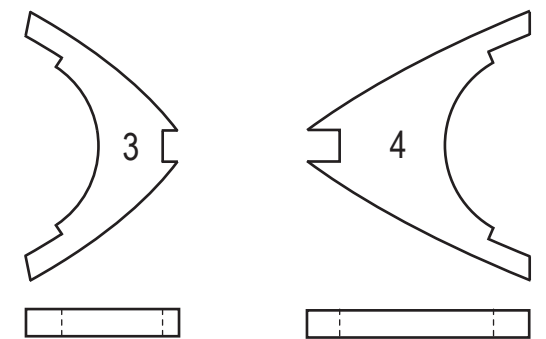
www.modelshipbuilder.com





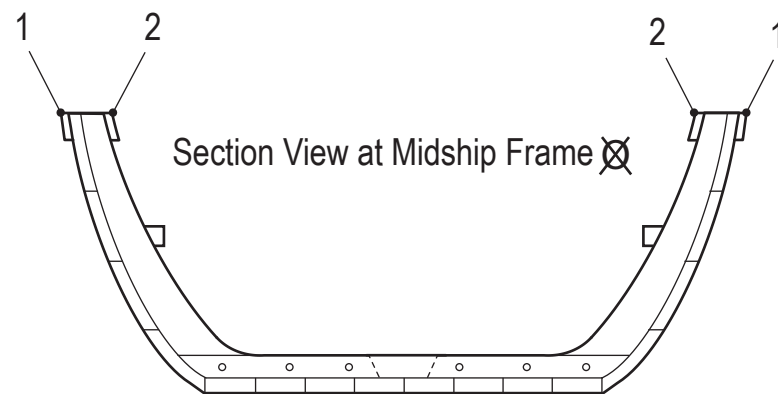
Plan View -
Aft Lodging Knee

Plan View -
Forward Lodging Knee

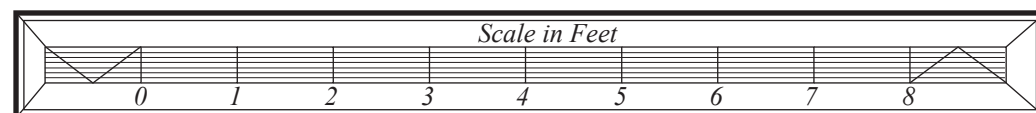


GUNWALES

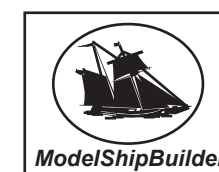
1. Outside Gunwale
2. Inside Gunwale
3. Lodging Knee - Forward
4. Lodging Knee - Aft



Section View at Midship Frame

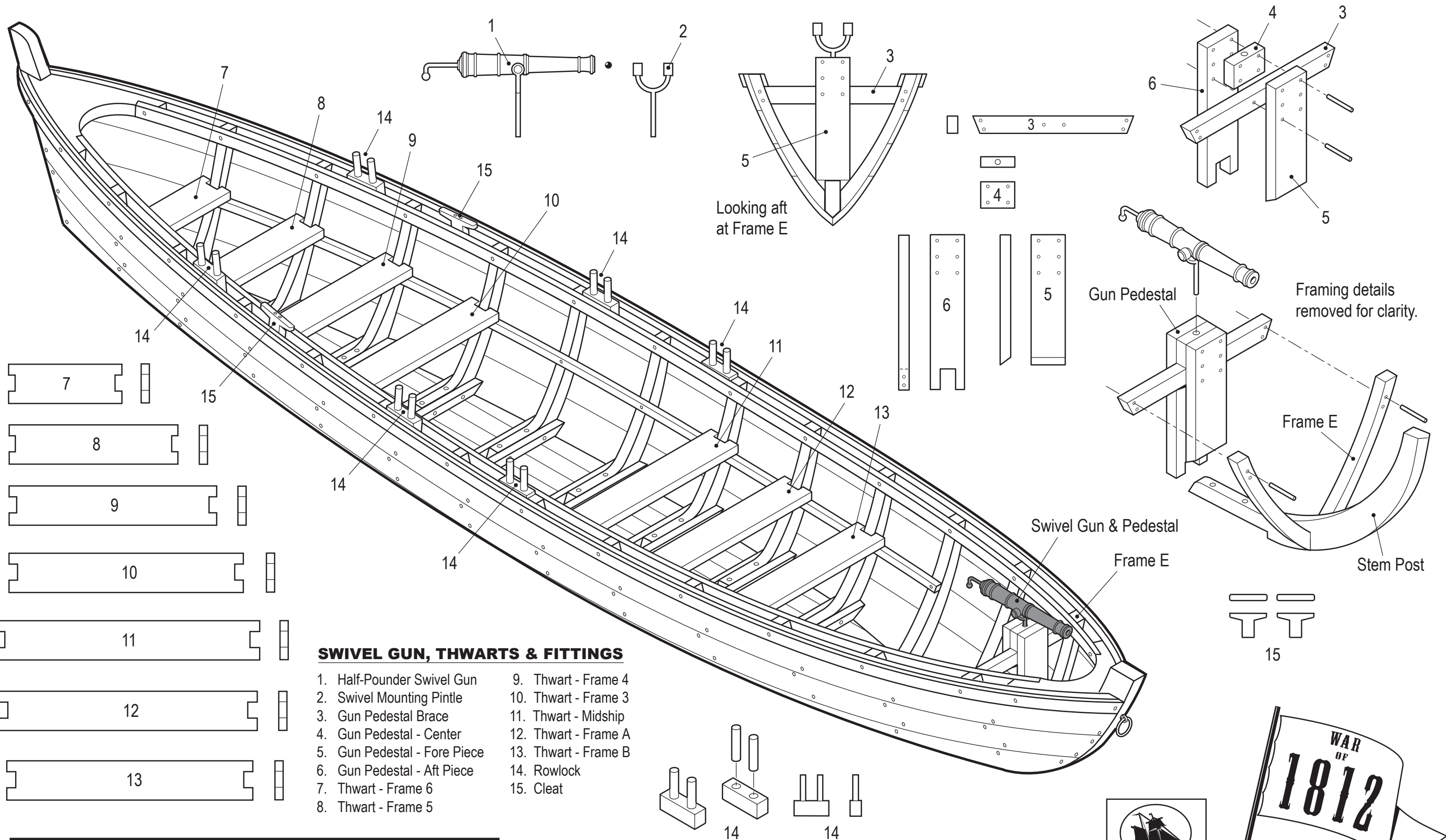


Batteau
Drawn by Jeff Staudt - January, 2011



www.modelshipbuilder.com



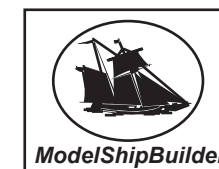


SWIVEL GUN, THWARTS & FITTINGS

- | | |
|------------------------------|----------------------|
| 1. Half-Pounder Swivel Gun | 9. Thwart - Frame 4 |
| 2. Swivel Mounting Pintle | 10. Thwart - Frame 3 |
| 3. Gun Pedestal Brace | 11. Thwart - Midship |
| 4. Gun Pedestal - Center | 12. Thwart - Frame A |
| 5. Gun Pedestal - Fore Piece | 13. Thwart - Frame B |
| 6. Gun Pedestal - Aft Piece | 14. Rowlock |
| 7. Thwart - Frame 6 | 15. Cleat |
| 8. Thwart - Frame 5 | |

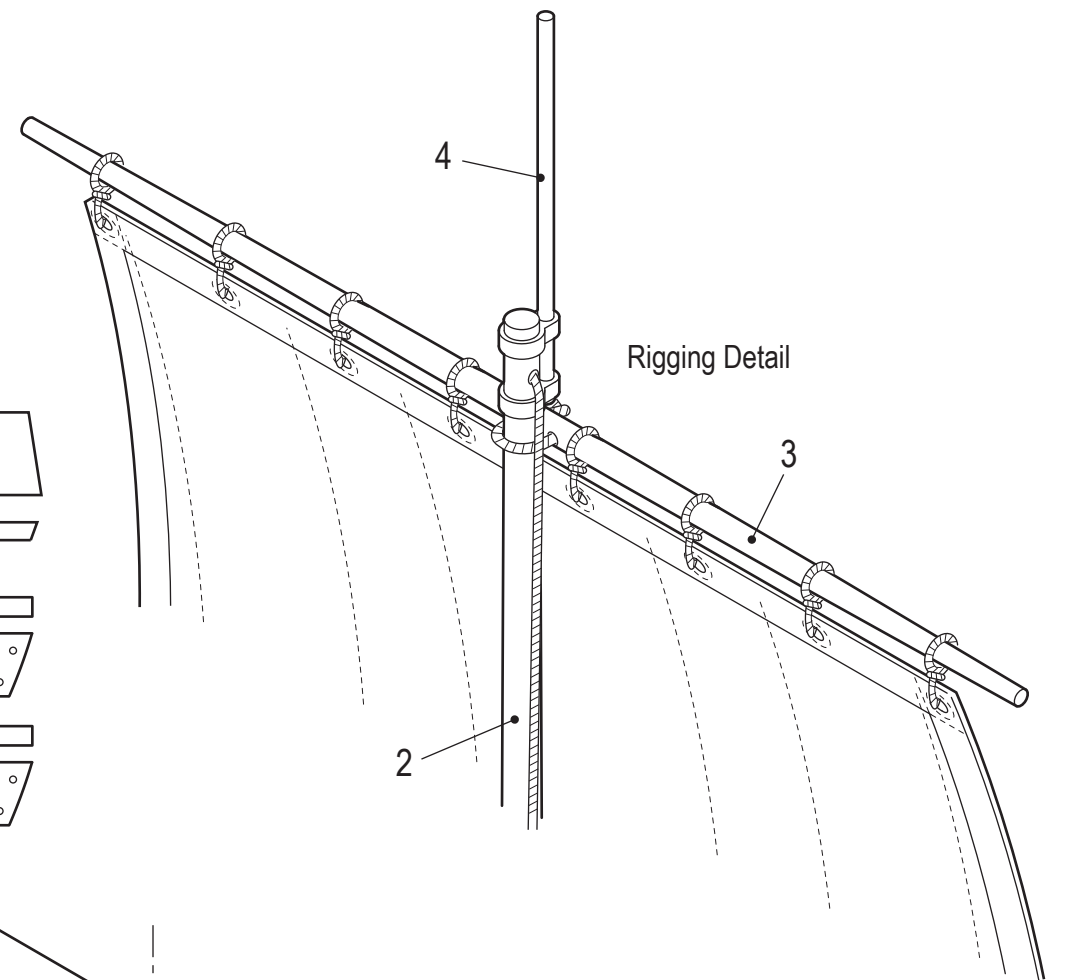
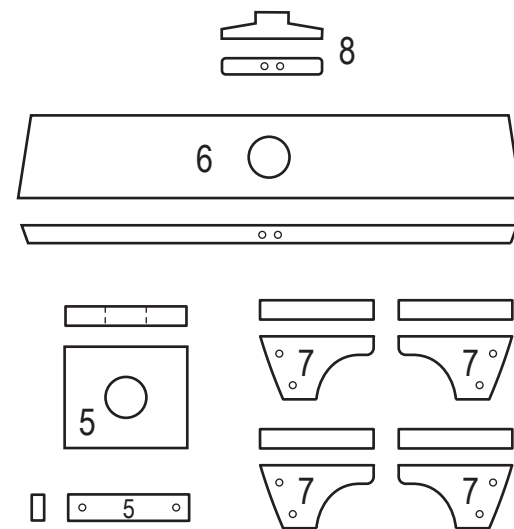
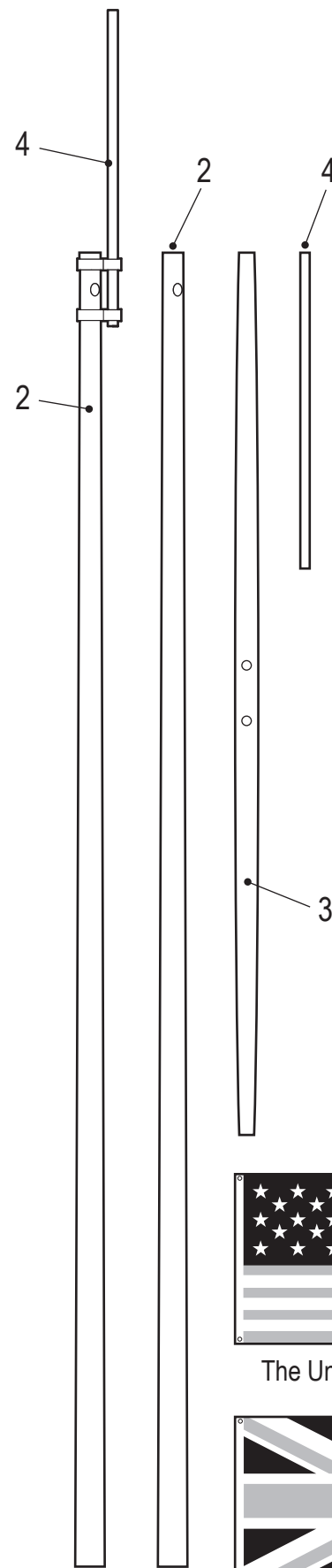
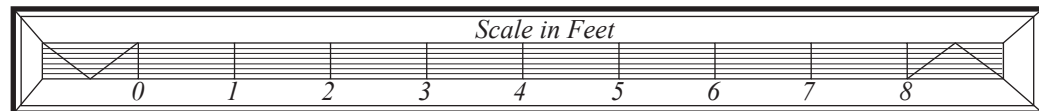
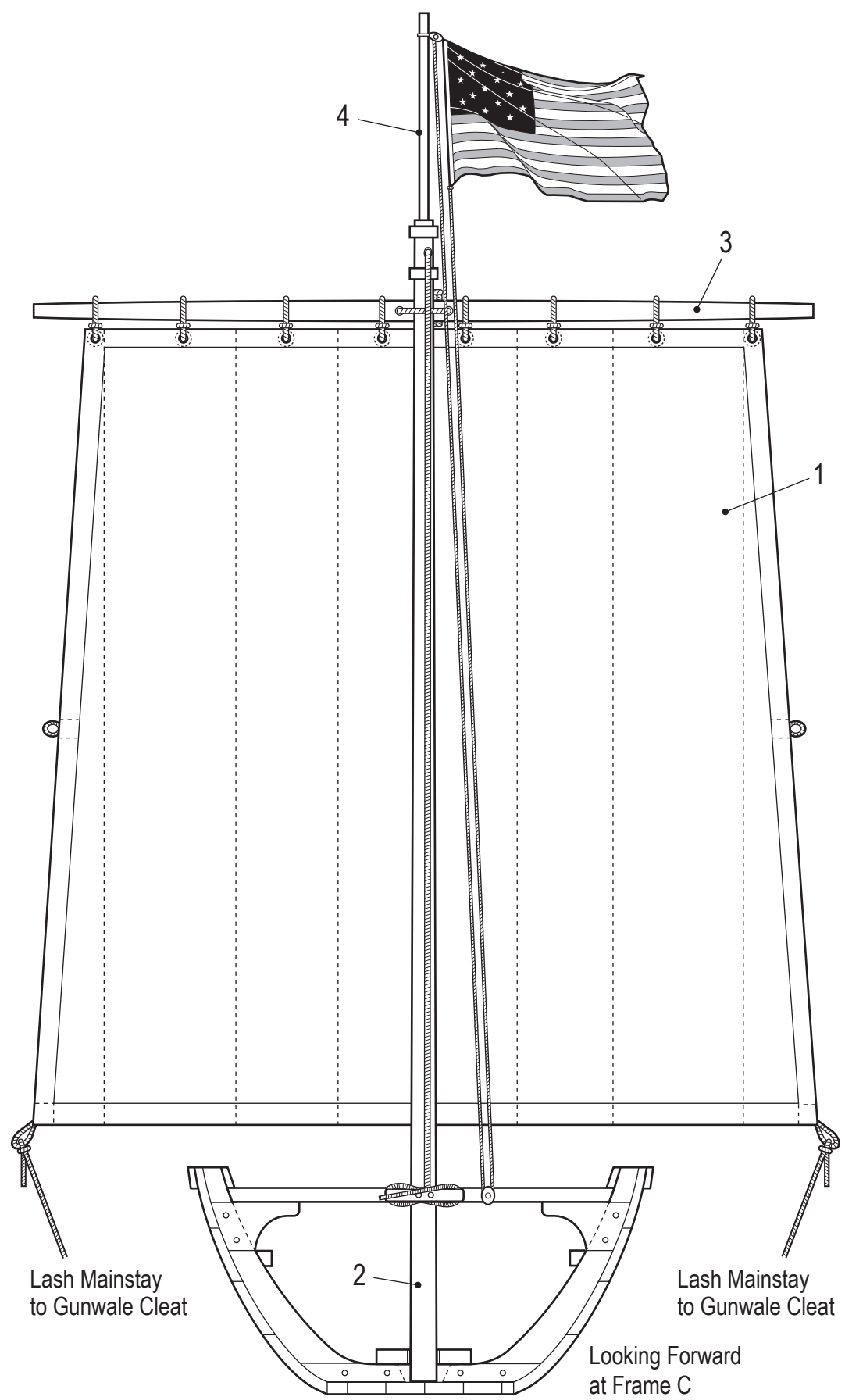
Bateau

Drawn by Jeff Staudt - January, 2011



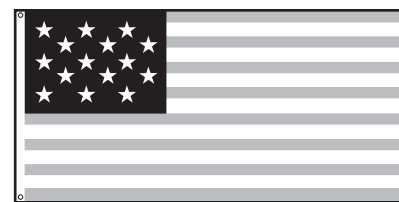
www.modelshipbuilder.com



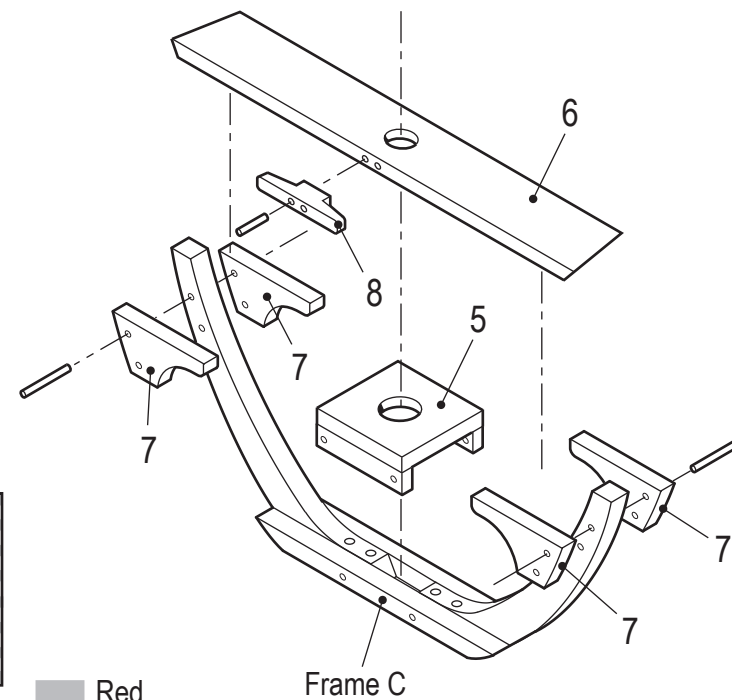


MAST & SAIL

1. Sail
2. Mast
3. Yard
4. Flagstaff
5. Mast Step
6. Brace
7. Lodging Knee
8. Cleat

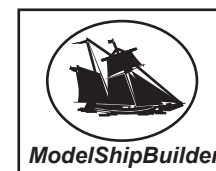


Red
White
Blue

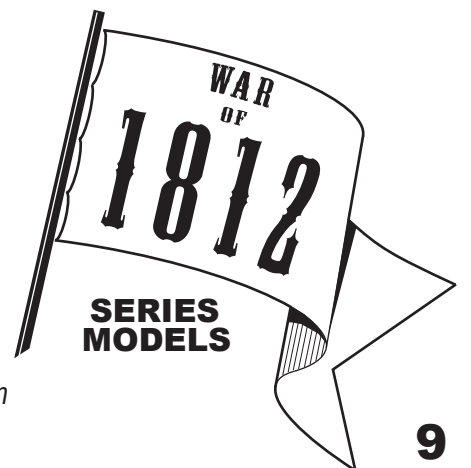


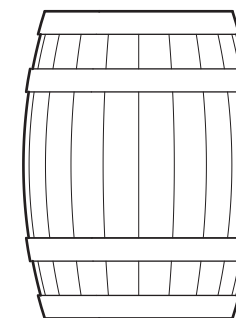
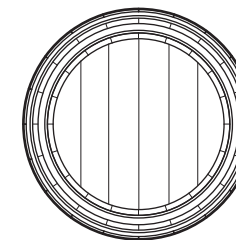
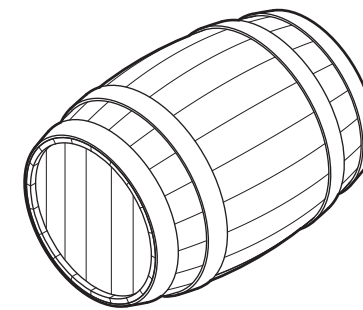
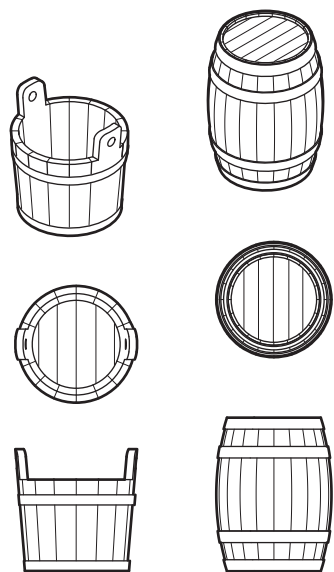
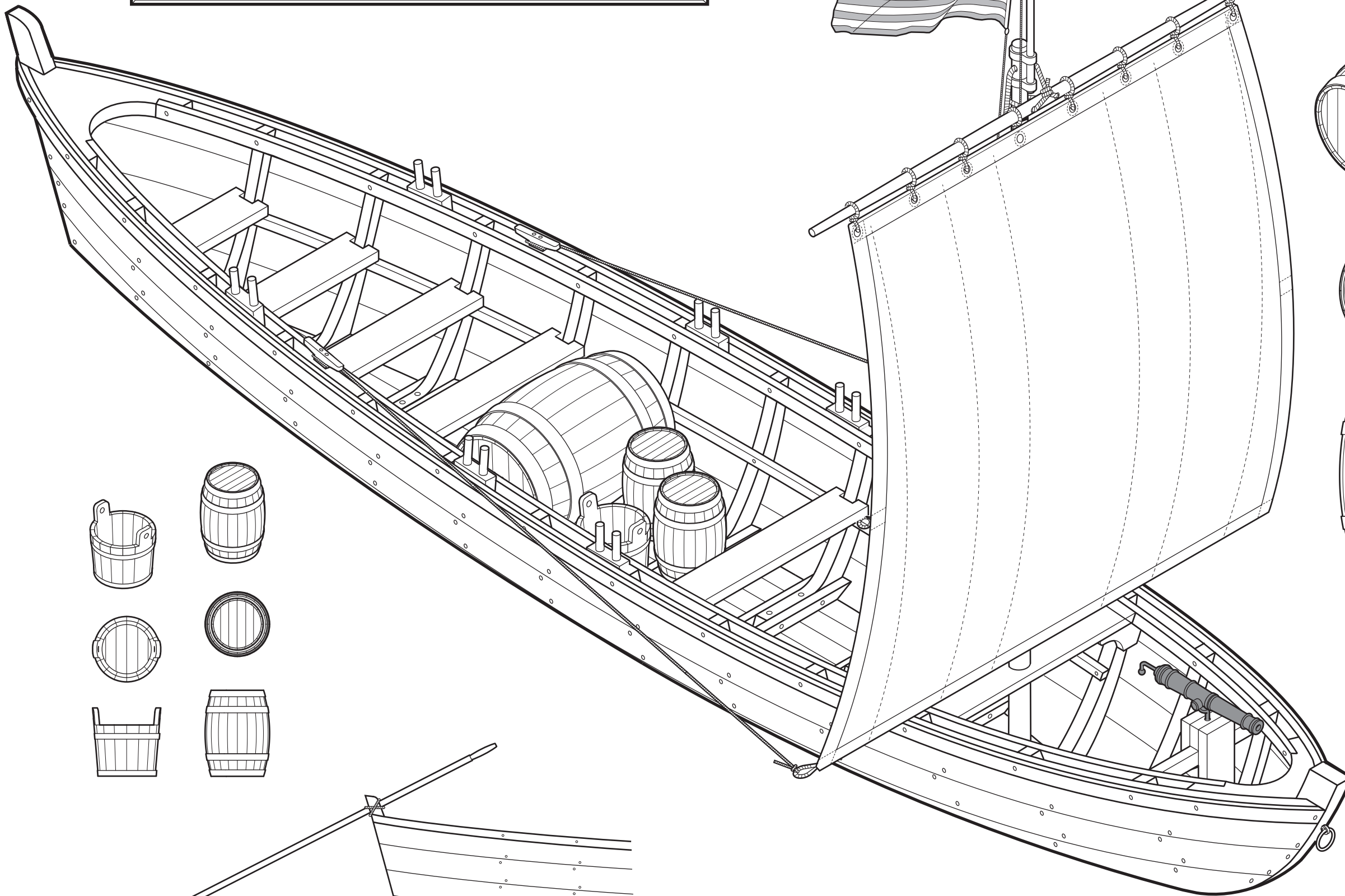
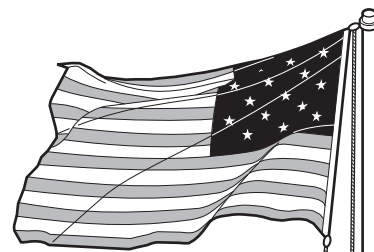
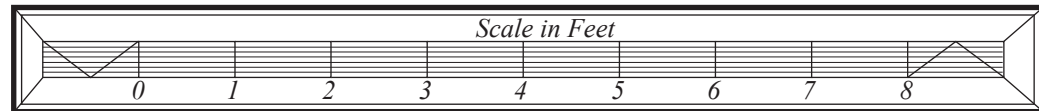
Batteau

Drawn by Jeff Staudt - January, 2011

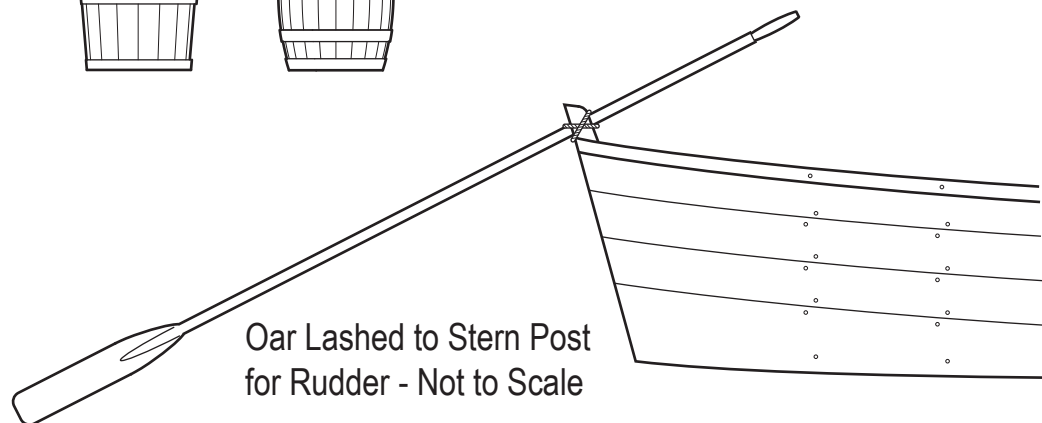
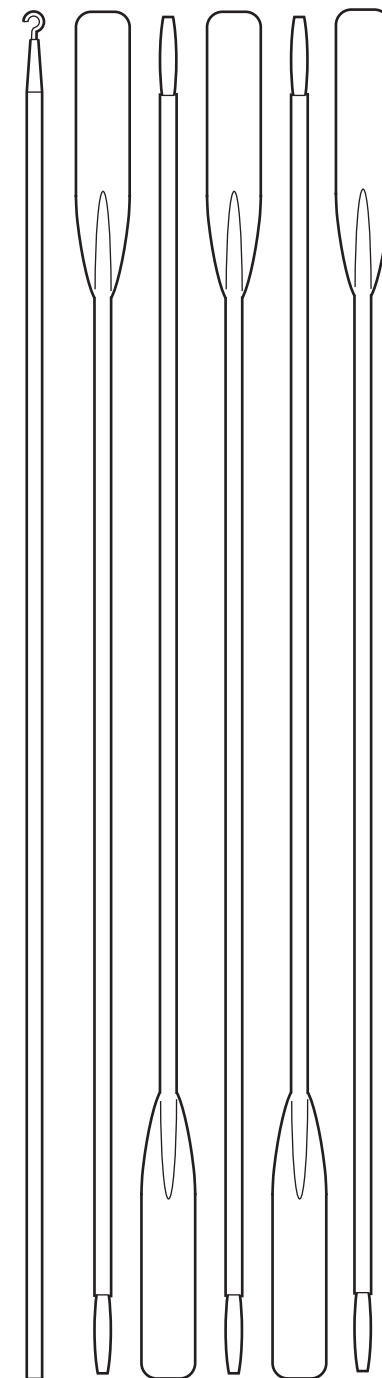


www.modelshipbuilder.com





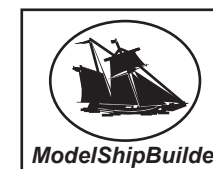
PROVISIONS



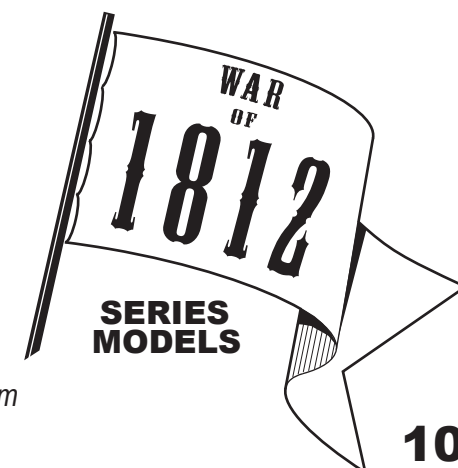
Oar Lashed to Stern Post
for Rudder - Not to Scale

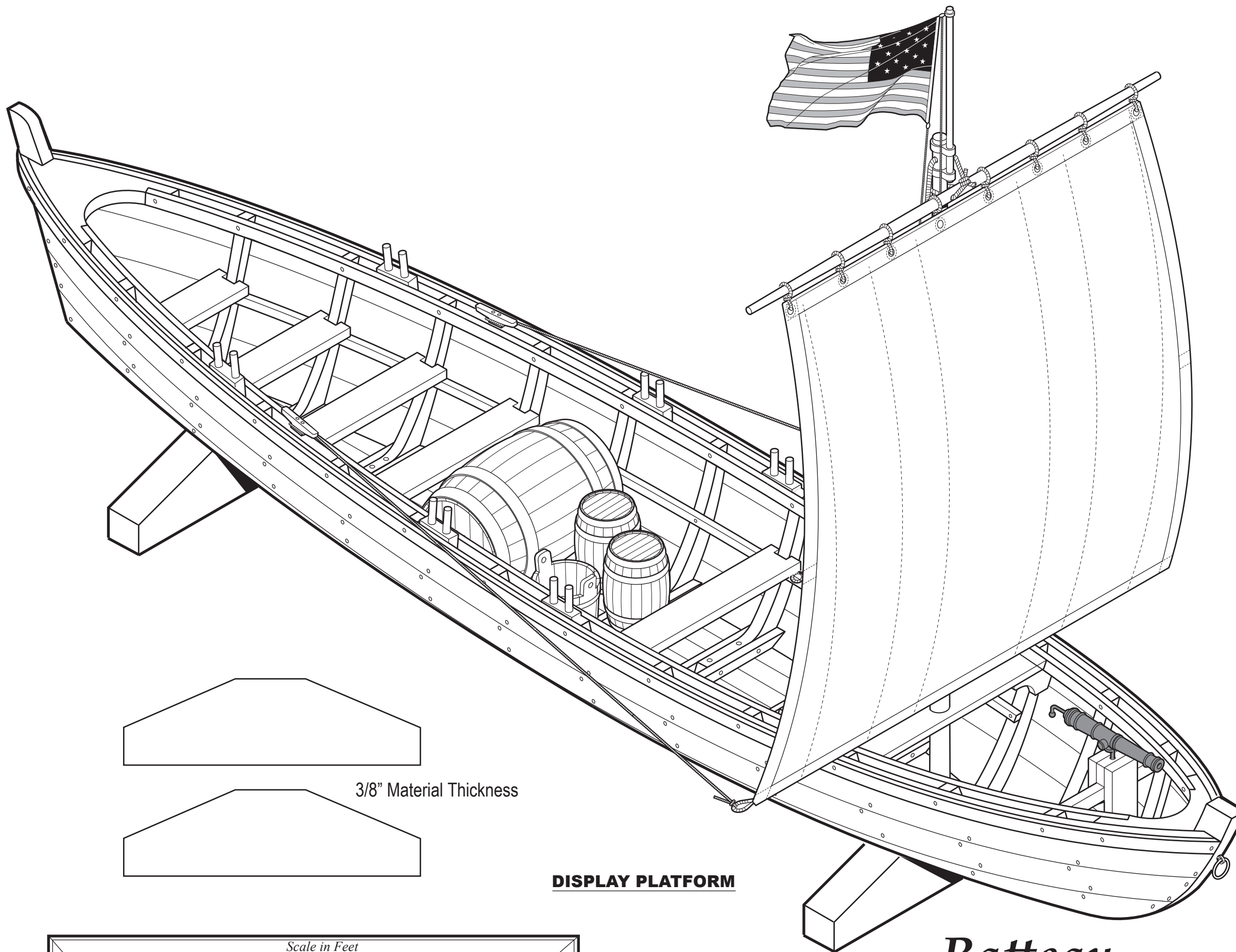
Batteau

Drawn by Jeff Staudt - January, 2011



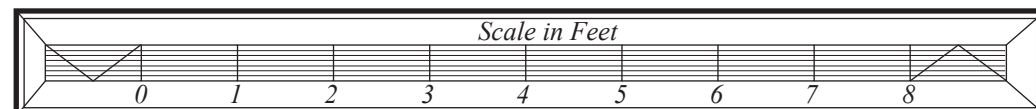
www.modelshipbuilder.com





3/8" Material Thickness

DISPLAY PLATFORM



Batteau

Drawn by Jeff Staudt - January, 2011



www.modelshipbuilder.com

