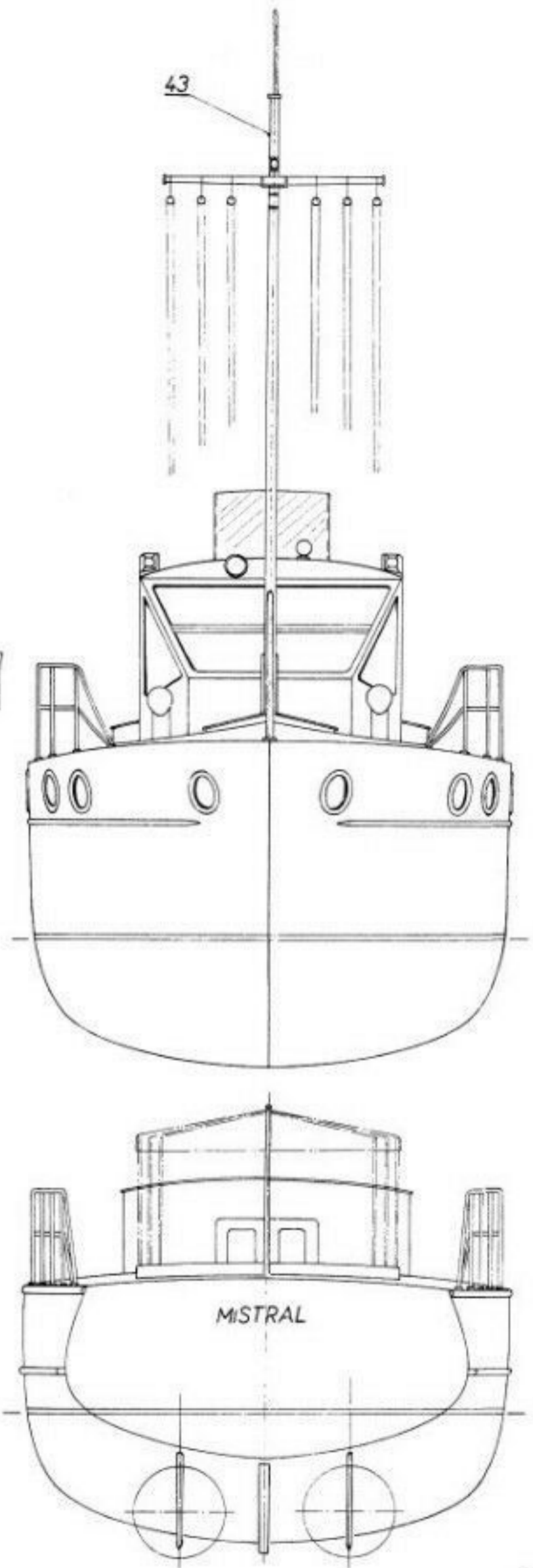
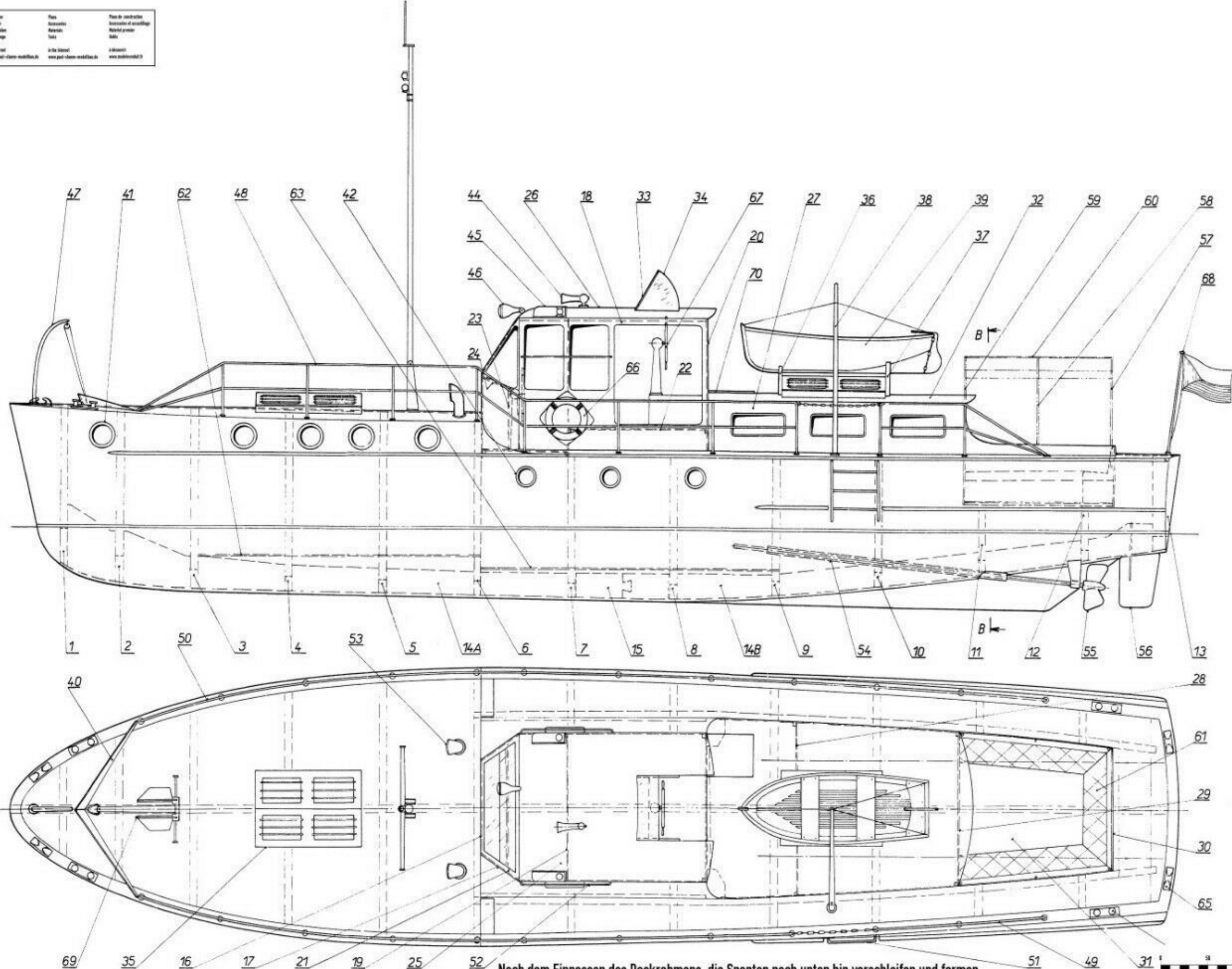


Bezeichnung	Plan	Plan der Konstruktion
Deckplan	Deckplan	Deckplan mit Ausstattung
Deckplan	Deckplan	Deckplan mit Ausstattung
Deckplan	Deckplan	Deckplan mit Ausstattung
Deckplan	Deckplan	Deckplan mit Ausstattung



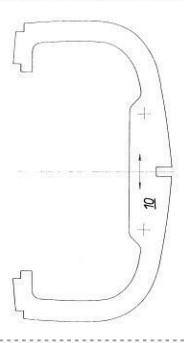
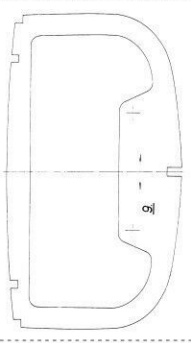
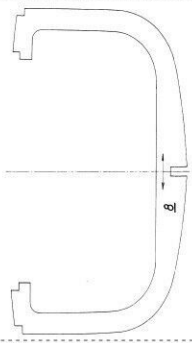
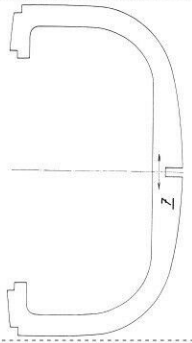
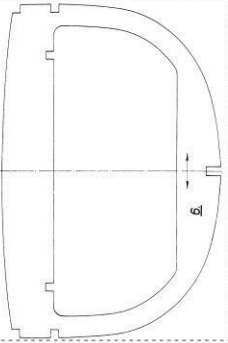
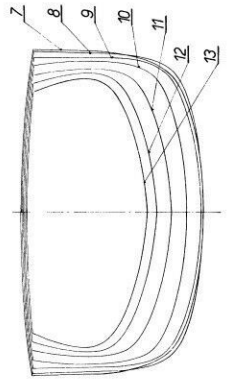
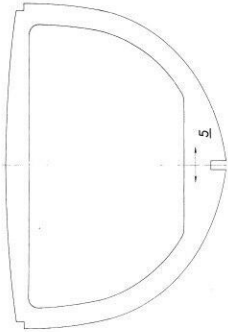
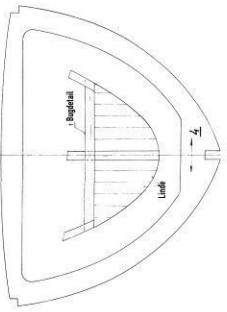
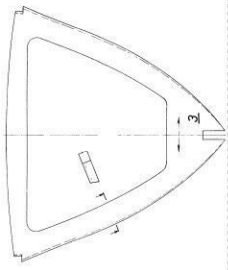
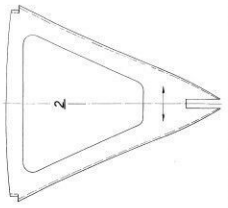
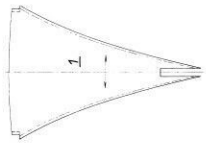
Nach dem Einpassen des Deckrahmens, die Spanten nach unten hin verschleifen und formen



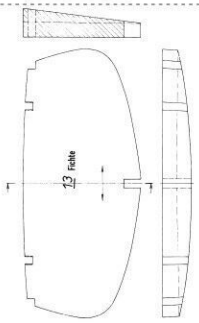
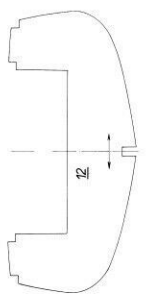
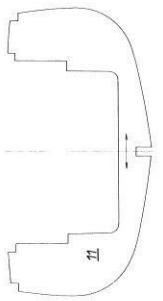
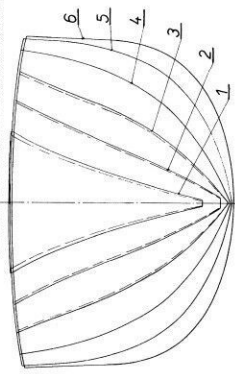
Technische Zeichnung mit allen notwendigen Verbindungen

Zeichnung	MISTRAL F2A Jacht
Blatt	ZIRC_0061
Skala	1:1
Vermaßstab	1:1
Gezeichnet	
Geprüft	
Freigegeben	

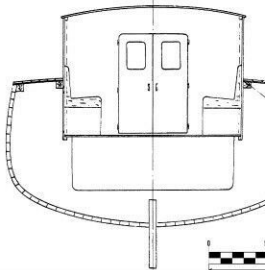
BRUNNEN



Spantenriss



Schnitt B - B



Leiste 2 x 10 mm

Leiste 7 x 7 mm

Leiste 4 x 8 mm

Maserrichtung

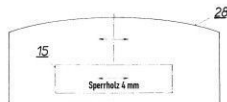
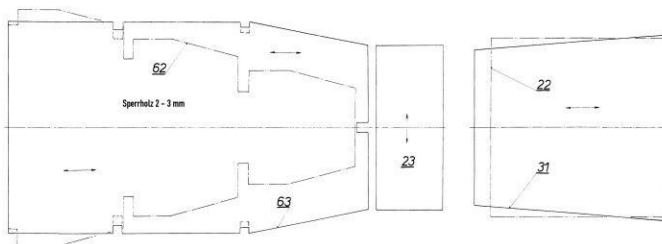
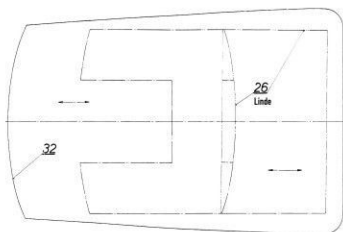
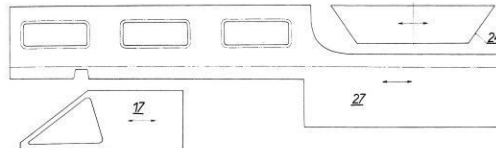
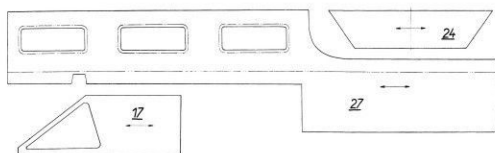
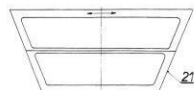
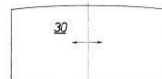
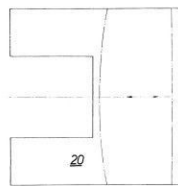
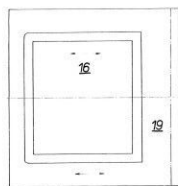
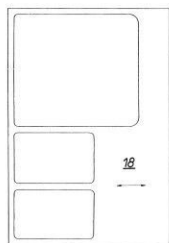
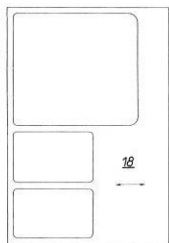
Diebstahlversicherung

Hersteller: Mistral

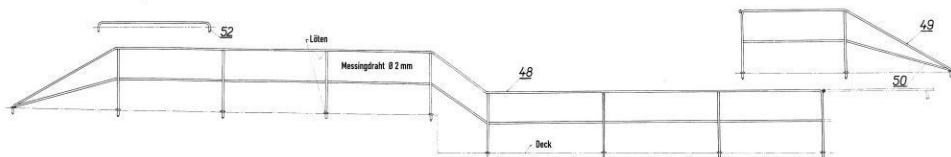
Modell: MISTRAL F24 Jacht

230C_0041





Maserrichtung



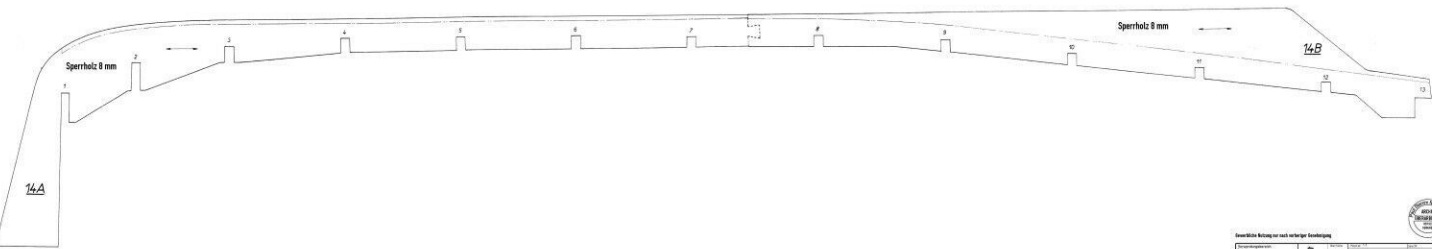
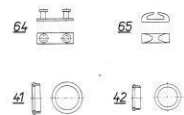
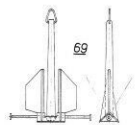
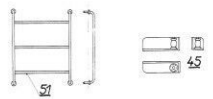
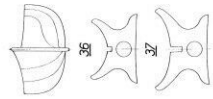
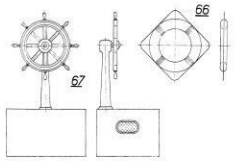
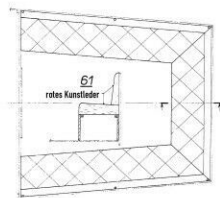
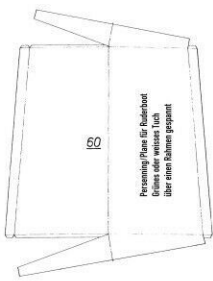
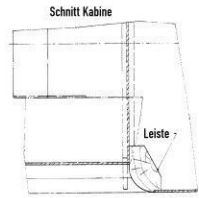
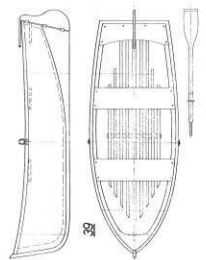
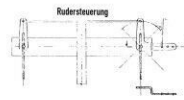
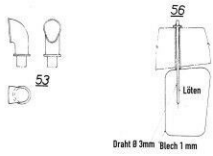
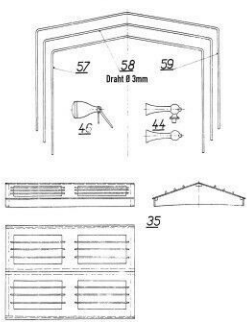
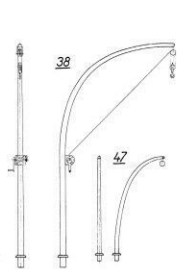
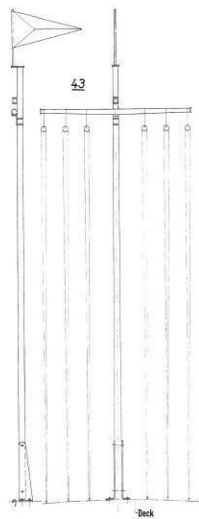
Skizzenliste

№	Bezeichnung	Stückzahl	Material	Verwendet
1	16	1	Alu	
2	18	1	Alu	
3	19	1	Alu	
4	20	1	Alu	
5	21	1	Alu	
6	22	1	Alu	
7	23	1	Alu	
8	24	1	Alu	
9	25	1	Alu	
10	26	1	Alu	
11	27	1	Alu	
12	28	1	Alu	
13	29	1	Alu	
14	30	1	Alu	
15	31	1	Alu	
16	32	1	Alu	
17	33	1	Kunststoff	
18	34	1	Kunststoff	
19	48	1	Alu	
20	49	1	Alu	
21	50	1	Alu	
22	52	1	Alu	
23	70	1	Linde	

MISTRAL FZA Jacht

23RC_00A1





Hersteller: Mistral Jachtbau

Modell: MISTRAL F2A Jacht

230C_0041

1:1